



House and Land Package



Lot 444 Karra Avenue



Designed for today's dynamic lifestyle, Lot 444 features a spacious open floorplan, inviting your family to come together to cook, dine and relax. Through the rear sliding doors and you're in your own charming courtyard – a pocket of paradise perfect for entertaining friends and family.

Upstairs, the primary suite is a true retreat, serviced by a luxurious ensuite and walk-in robe. This level also includes two additional bedrooms and a stylish main bathroom, ensuring ample space for relaxation and privacy.

Elegantly designed in every aspect, Lot 444 brings together space, style, and comfort in equal measure.

Discover the essence of luxurious living at Lot 444.

For more information,
contact a Seaton sales
consultant on **1800 161 283**
or visit [Seaton5023.com.au](https://www.seaton5023.com.au)



A COMMUNITY BY

Renewal SA



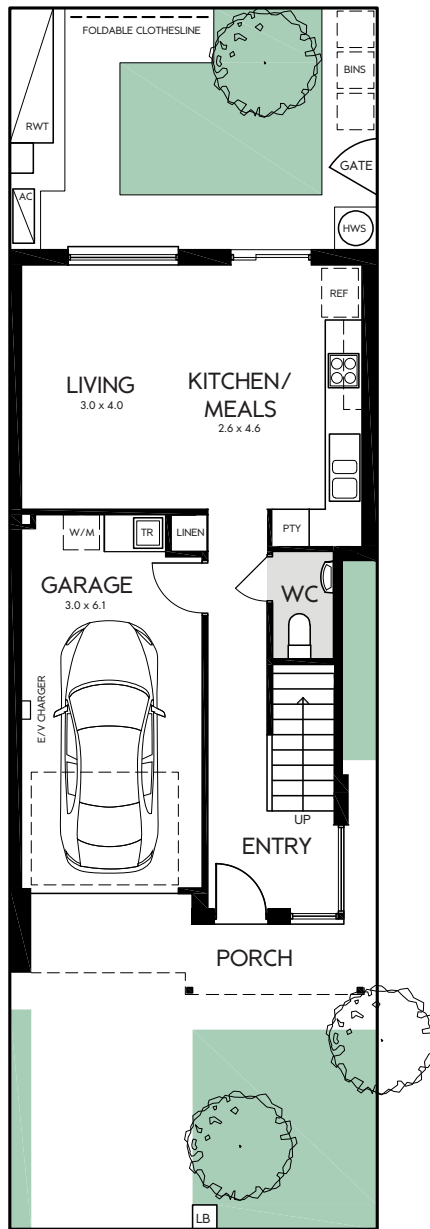
Delivered by Renewal SA in partnership with the South Australian Housing Trust.

House and Land Package

Lot 444 Karra Avenue

A home packed with features including:

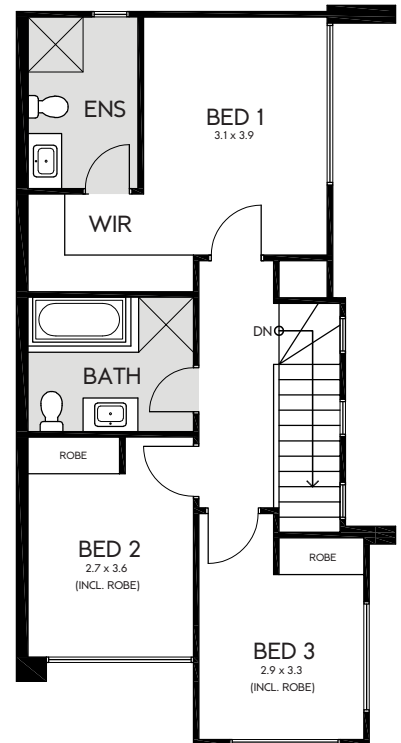
- Stone benchtops
- Ducted air conditioning
- Double glazing
- Internal roller blinds
- Black and stainless-steel appliances
- Custom-designed joinery throughout
- Timber laminate and plush carpets throughout
- Automatic, panel-lift garage door
- Built-in sliding robes to bedrooms
- Electric heat pump hot water system
- Choice of colour schemes, selections and upgrades available



GROUND FLOOR



AREAS	m2
LOT 444 SIZE	131.91
GROUND FLOOR	41.82
UPPER FLOOR	63.23
GARAGE	19.97
PORCH	4.97
OVERHANG	1.92
TOTAL	131.91



FIRST FLOOR

Lot 444 floorplan as shown.

Whilst all care has been taken in the preparation of this material, no responsibility is taken for errors or omissions and details may be subject to change. Intending purchasers should not rely on statements or representations and are advised to make their own enquiries to satisfy themselves in all respects. All allotment dimensions are indicative only. Artwork, images, and plans are impressions only and are not to be relied upon as a definitive reference. The Seaton development intends by this statement to exclude liability for all information contained herein. RLA 60810. Builders Licence number 57020. Correct as at February 2025.