

seaton

# karra

COLLECTION



Artist impression

# McInnes

Lots 447, 448, 449, 450  
Karra Avenue



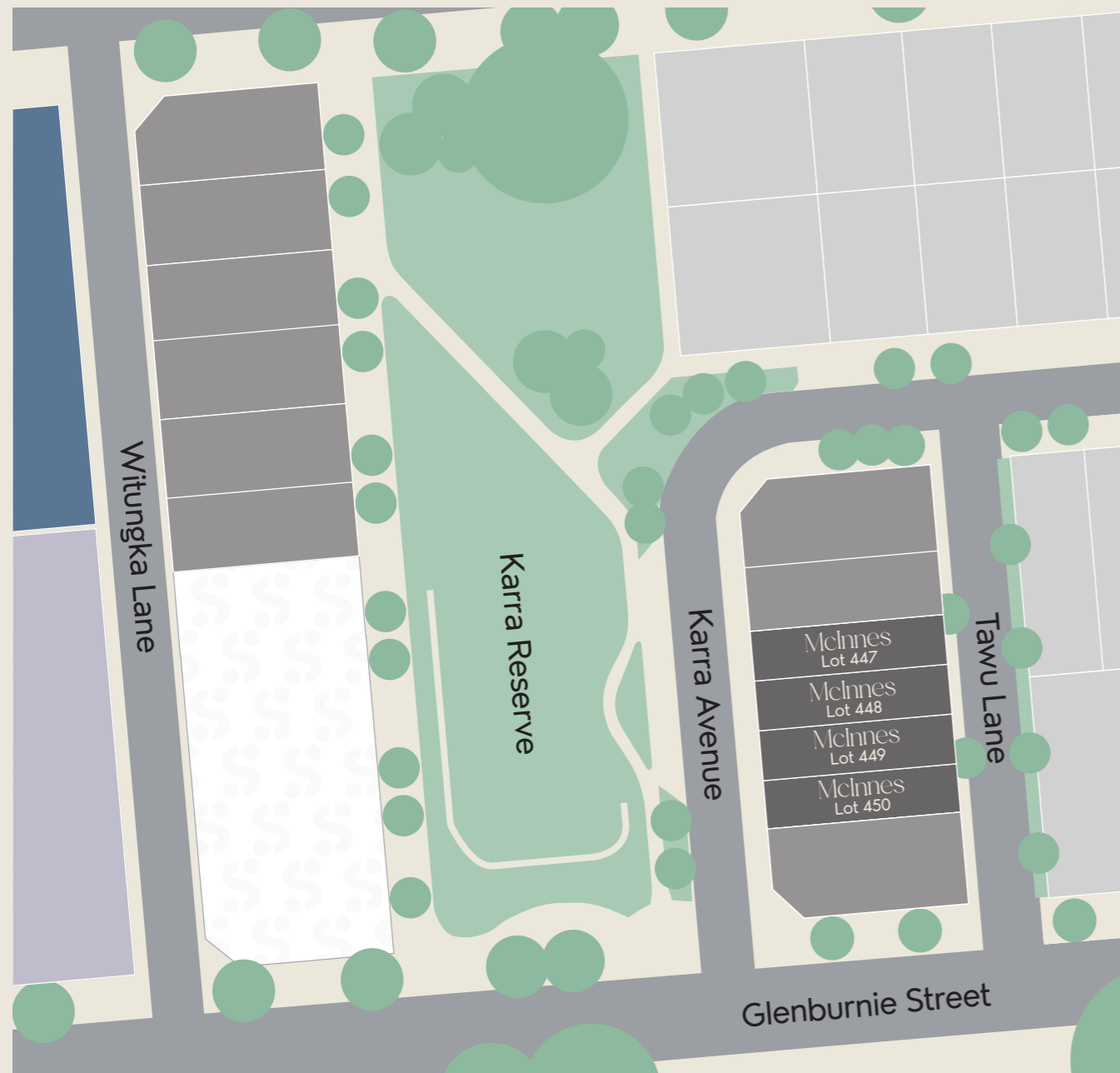
# A new view on Seaton

Fronting Seaton's Karra Reserve, this exclusive collection of terraces has been thoughtfully designed to stand apart.

Elevated first-floor living areas take full advantage of sweeping views across the neighbouring green reserve, creating a sense of space and outlook rarely found in low-maintenance living.

With premium inclusions and a level of design sophistication that sets a new benchmark for the community, these residences represent a premium offering — crafted for those who seek something truly exceptional.

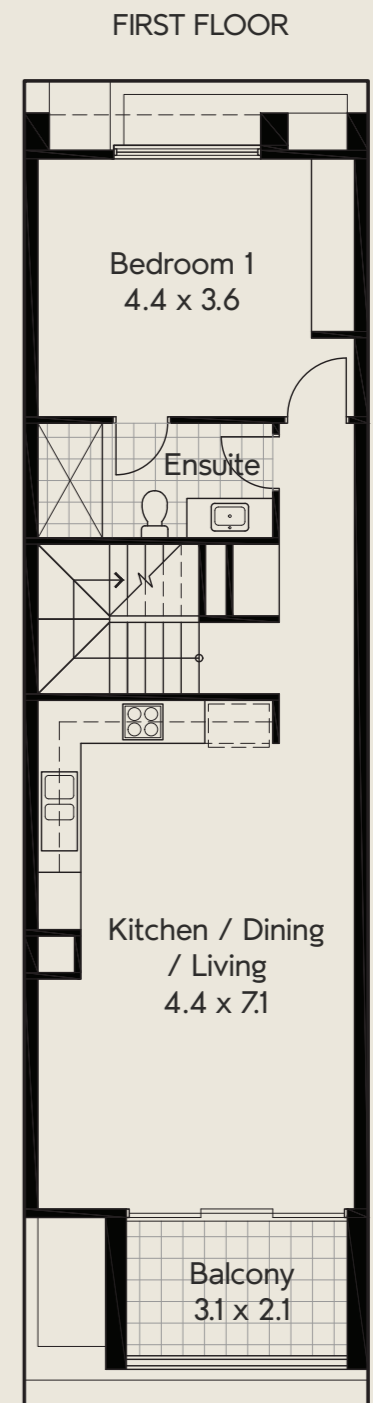
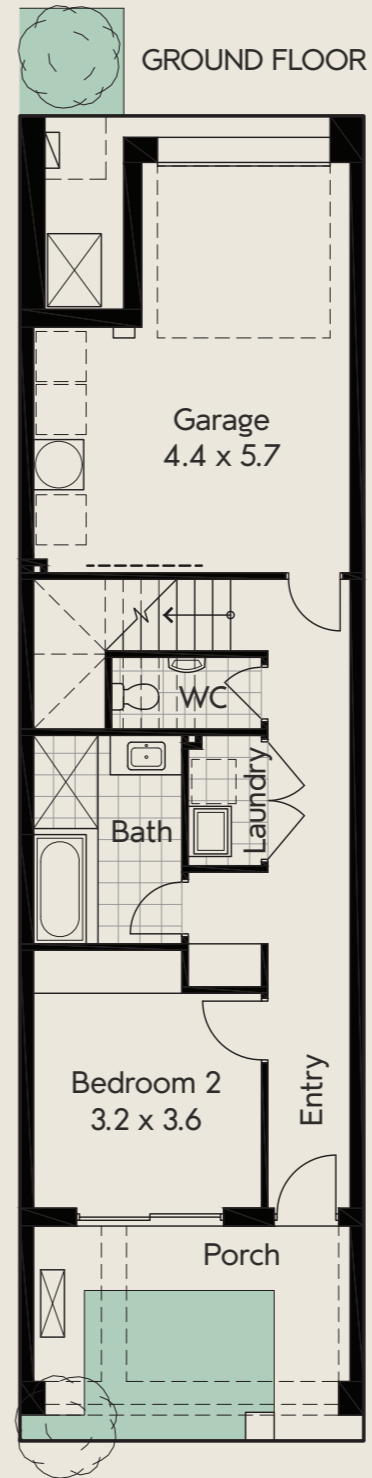
# Karra Collection Release Plan



- Previous releases
- Karra Collection
- Future release
- Future apartments
- SA Housing Trust apartments

Ground floor:	44.35 m <sup>2</sup>
First floor:	73.38 m <sup>2</sup>
Garage:	26.79 m <sup>2</sup>
Porch:	12.10 m <sup>2</sup>
Balcony:	6.94 m <sup>2</sup>
<b>Total:</b>	<b>163.56 m<sup>2</sup></b>

## McInnes Lots 447, 448, 449, 450



\*Lot 447 floorplan shown

**2**

**2.5**

**1**

Scan to  
enquire



Living in a Karra Collection home, your everyday outlook is one of calm and connection – where open reserve views become the backdrop to life's simple moments. From morning coffee to sunset dinners, your light-filled living space opens to nature, creating a sense of freedom.

Here, the beauty on your doorstep isn't just something to admire – it's something you get to live with, every day.



Artist impression



Artist impression

Named after *John McInnes*, Mayor of the Town of Hindmarsh (now the City of Charles Sturt) from 1933–1939.

The bright and inviting McInnes design is the perfect start for families looking for style, comfort and value. This clever, two-bedroom home maximises every inch of space for effortless living. The ground floor offers convenience with a single lock-up garage, a dedicated utilities space, a full bathroom and the first of the two spacious bedrooms, complete with built-in robe.

Upstairs, the light-filled, open-plan kitchen, dining and living area flows seamlessly out to the balcony with beautiful views over the reserve – ideal for your morning coffee or evening relaxation. On this floor, the master bedroom features a thoughtfully-designed ensuite with built-in robe.

Offering an exceptional blend of modern design and an unbeatable, convenient location, the McInnes design is the smart, stylish place to plant your roots and begin your life at Seaton.

1800 161 283

info@seaton5023.com.au

 seaton5023

 seaton\_5023

seaton5023.com.au

# seaton

colour your life.

  
BRADFORD  
HOMES

BY SCOTT SALISBURY

A COMMUNITY BY

Renewal SA



Government  
of South Australia

Delivered by Renewal SA in partnership with the South Australian Housing Trust.

Whilst all care has been taken in the preparation of this material, no responsibility is taken for errors or omissions and details may be subject to change. Intending purchasers should not rely on statements or representations and are advised to make their own enquiries to satisfy themselves in all respects. All allotment dimensions are indicative only. Artwork, images, and plans are impressions only and are not to be relied upon as a definitive reference. Prices are subject to change without notice. The Seaton development intends by this statement to exclude liability for all information contained herein. RLA60810