

karra

COLLECTION



Artist impression

Ralph

Lot 406
Witungka Lane



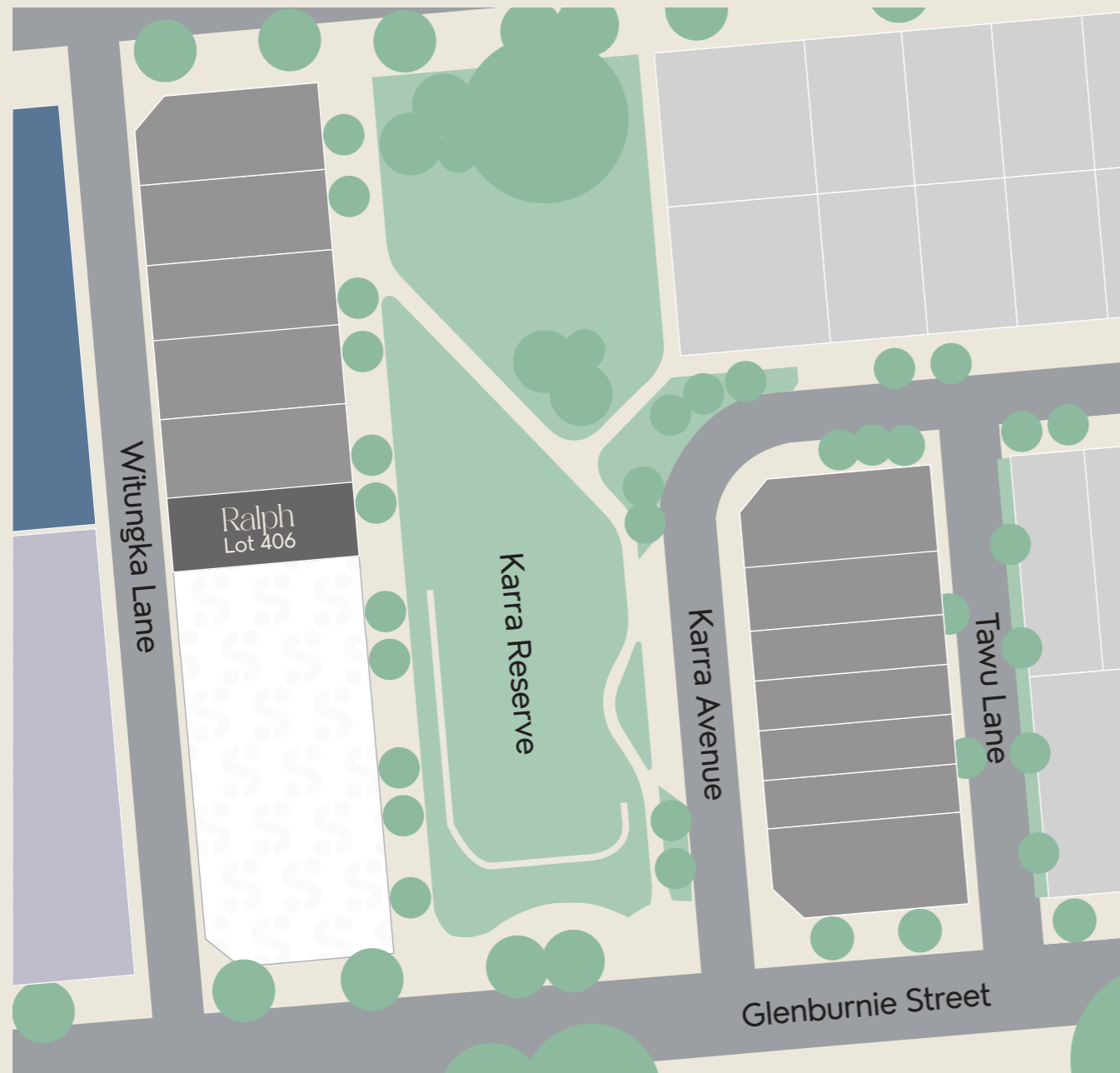
A new view on Seaton

Fronting Seaton's Karra Reserve, this exclusive collection of terraces has been thoughtfully designed to stand apart.

Elevated first-floor living areas take full advantage of sweeping views across the neighbouring green reserve, creating a sense of space and outlook rarely found in low-maintenance living.

With premium inclusions and a level of design sophistication that sets a new benchmark for the community, these residences represent a premium offering — crafted for those who seek something truly exceptional.

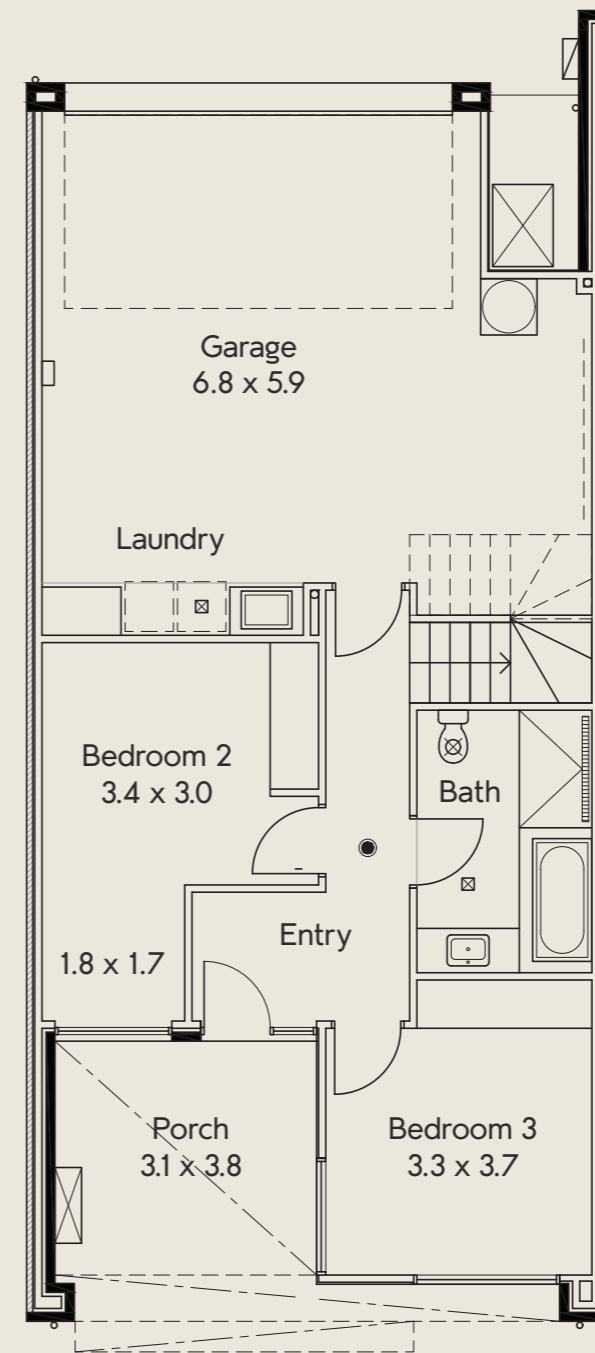
Karra Collection Release Plan



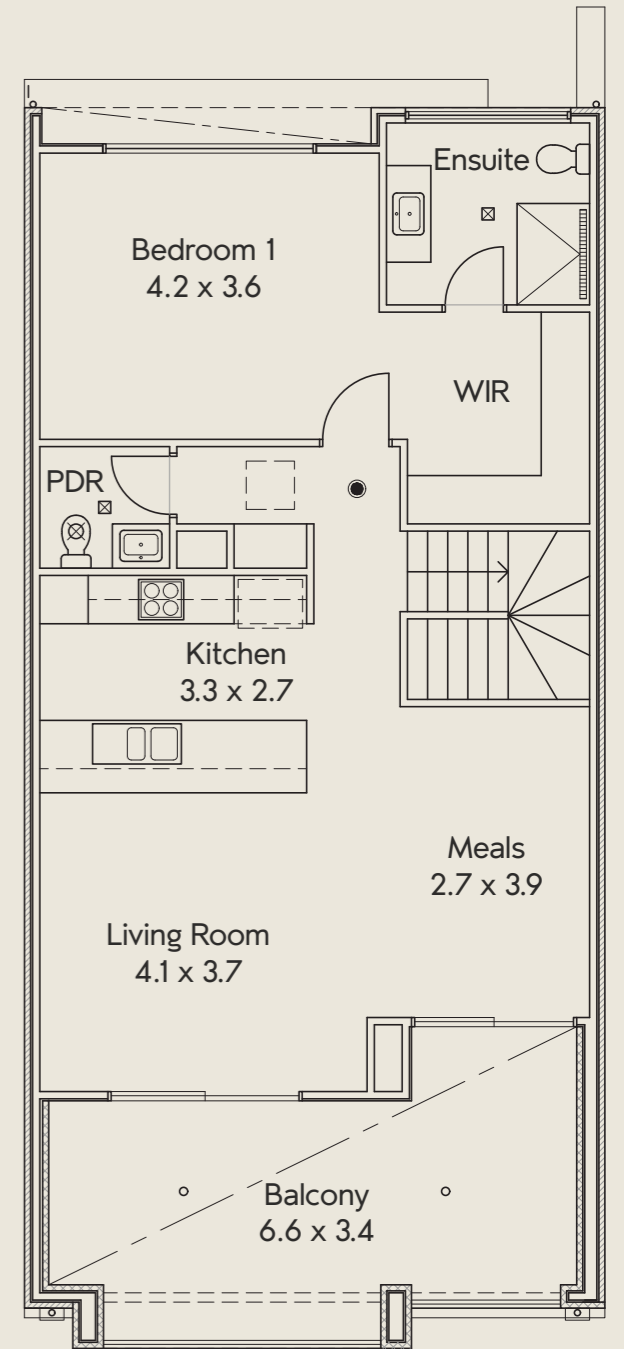
- Previous releases
- Karra Collection
- Future release
- Future apartments
- SA Housing Trust apartments

Ground floor:	49.30 m ²
First floor:	84.77 m ²
Garage:	46.48 m ²
Porch:	9.77 m ²
Balcony:	22.85 m ²
Total:	213.17 m²

Ralph Lot 406



GROUND FLOOR



FIRST FLOOR

3

2.5

2

Scan to
enquire



Living in a Karra Collection home, your everyday outlook is one of calm and connection – where open reserve views become the backdrop to life's simple moments. From morning coffee to sunset dinners, your light-filled living space opens to nature, creating a sense of freedom.

Here, the beauty on your doorstep isn't just something to admire – it's something you get to live with, every day.



Artist impression



Artist impression

Named after *Alfred William Ralph*, Mayor of the Town of Hindmarsh (now the City of Charles Sturt) during the 1890s.

The impressive Ralph design offers a lifestyle defined by outlook and elegance. This well-appointed home makes smart use of space across two expansive levels, crowned by a pitched roof facade that provides a striking presence.

The lower level is built for practical convenience, featuring a double lock-up garage, a utilities area and two well-proportioned bedrooms – both with built-in robes and access to a full bathroom.

Upstairs is the heart of the home, where the spectacular views unfold. The upper level features the generous master suite, complete with a walk-in robe and an elegant ensuite. The true showpiece is the open-plan kitchen, dining and living area, which opens directly onto a spacious balcony offering uninterrupted views of the reserve.

With its signature architectural detail and sitting directly on the reserve, the Ralph design blends effortless modern living with an enviable setting. Choosing your interior colour scheme will be the finishing touch in a home crafted for those looking for something exceptional.

1800 161 283

info@seaton5023.com.au

 seaton5023

 seaton_5023

seaton5023.com.au

seaton

colour your life.


BRADFORD
HOMES

BY SCOTT SALISBURY

A COMMUNITY BY

Renewal SA



Government
of South Australia

Delivered by Renewal SA in partnership with the South Australian Housing Trust.

Whilst all care has been taken in the preparation of this material, no responsibility is taken for errors or omissions and details may be subject to change. Intending purchasers should not rely on statements or representations and are advised to make their own enquiries to satisfy themselves in all respects. All allotment dimensions are indicative only. Artwork, images, and plans are impressions only and are not to be relied upon as a definitive reference. Prices are subject to change without notice. The Seaton development intends by this statement to exclude liability for all information contained herein. RLA60810