

seaton

The Evans
Lots 33 & 62





Artist impression

The Evans House and Land Package

Nestled on a corner next to one of Seaton's leafy green reserves, The Evans is an extremely well-considered design that optimises the use of space and natural light, and is perfect for a growing family.

Inside, this home continues to elevate the whole living experience. The open-plan ground floor seamlessly unites the living, dining and kitchen area. Along with a guest powder room, this level offers a neatly integrated European laundry, access to the backyard and reserve and has off-street space for a second car.

Lot 33 Parkana Street

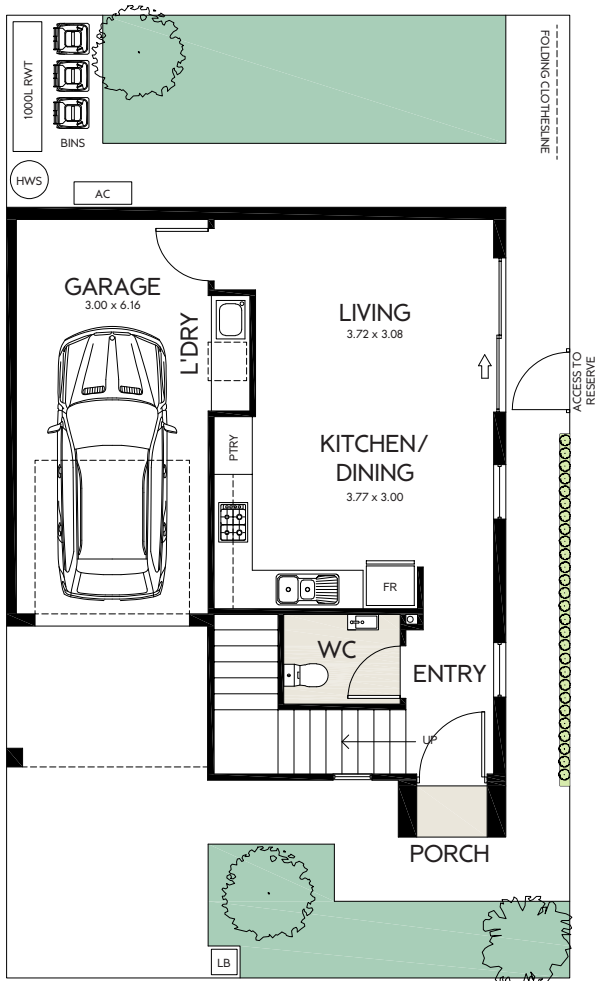
 3  1  2  1

Upstairs, three well-proportioned bedrooms each feature built-in robes, including one with calming views across the reserve. With a family bathroom, including a full-sized bath and separate WC add to the everyday convenience of this home.

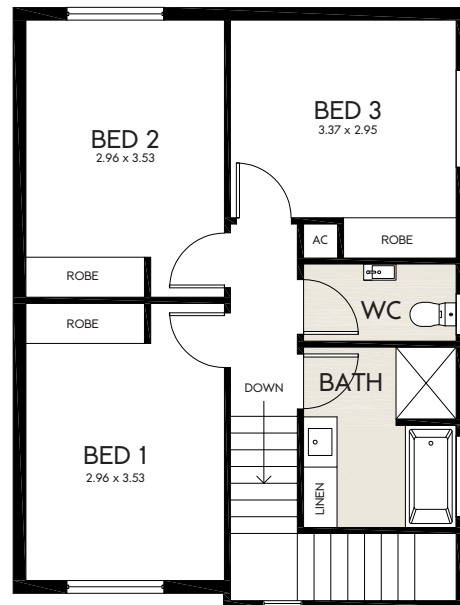
Combining low-maintenance living with all the comforts a modern family needs, The Evans design adds a direct connection to natural tranquility.

The Evans

House and Land Package



GROUND FLOOR



FIRST FLOOR



AREAS	m2
LAND SIZE	132.35
GROUND LIVING	40.40
UPPER LIVING	60.10
GARAGE	21.77
PORCH	1.52
TOTAL LIVING	123.79

Lot 33 Parkana Street

The townhouse that ticks every box, including:

- Direct access to neighbouring reserve
- Front and backyard landscaping
- Colorbond fencing
- Stainless steel dishwasher
- Electric heat pump hot water system
- Custom-designed joinery throughout
- Wall-mounted split-system air-conditioning to living and main bedroom
- Durable woodgrain timber laminate flooring and carpets throughout
- Built-in sliding robes to all bedrooms
- Automatic panel-lift garage door
- Choice of colour schemes, selections and upgrades available
- Clothesline and letterbox






The Evans House and Land Package

Nestled on a corner next to one of Seaton's leafy green reserves, The Evans is an extremely well-considered design that optimises the use of space and natural light, and is perfect for a growing family.

Inside, this home continues to elevate the whole living experience. The open-plan ground floor seamlessly unites the living, dining and kitchen area. Along with a guest powder room, this level offers a neatly integrated European laundry, access to the backyard and reserve and has off-street space for a second car.

Lot 62 Matthews Avenue

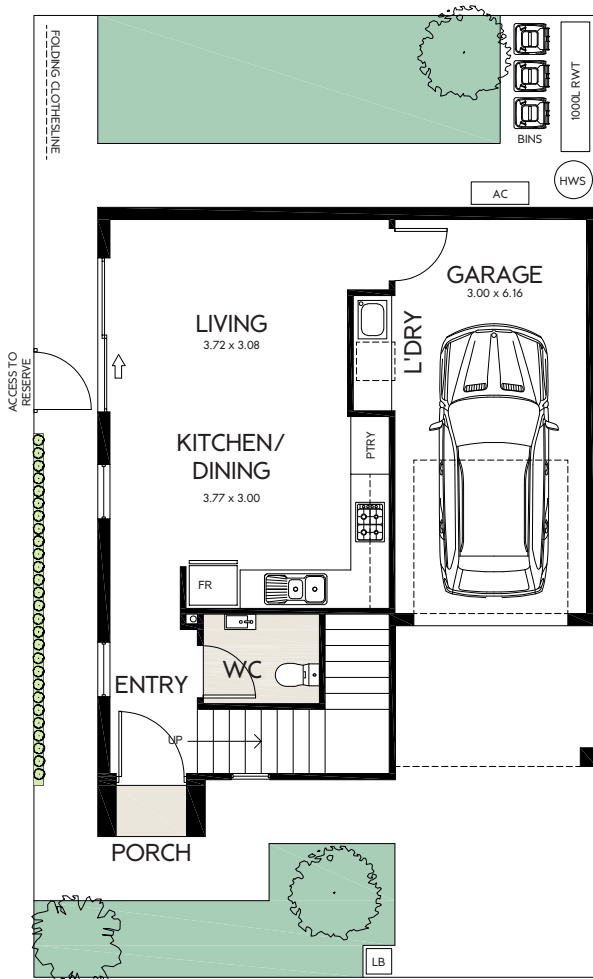
 3  2.5  1

Upstairs, three well-proportioned bedrooms each feature built-in robes, including one with calming views across the reserve. With a family bathroom, including a full-sized bath and separate WC add to the everyday convenience of this home.

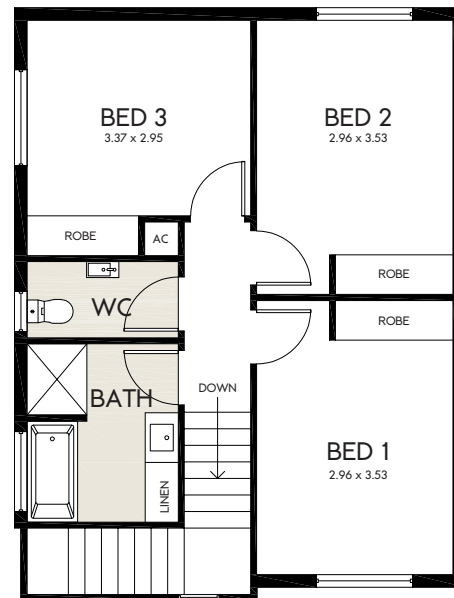
Combining low-maintenance living with all the comforts a modern family needs, The Evans design adds a direct connection to natural tranquility.

The Evans

House and Land Package



GROUND FLOOR



FIRST FLOOR



AREAS	m2
LAND SIZE	132.35
GROUND LIVING	40.40
UPPER LIVING	60.10
GARAGE	21.77
PORCH	1.52
TOTAL LIVING	123.79

Lot 62 Matthews Avenue

The townhouse that ticks every box, including:

- Direct access to neighbouring reserve
- Front and backyard landscaping
- Colorbond fencing
- Stainless steel dishwasher
- Electric heat pump hot water system
- Custom-designed joinery throughout
- Wall-mounted split-system air-conditioning to living and main bedroom
- Durable woodgrain timber laminate flooring and carpets throughout
- Built-in sliding robes to all bedrooms
- Automatic panel-lift garage door
- Choice of colour schemes, selections and upgrades available
- Clothesline and letterbox

1800 161 283
info@seaton5023.com.au

 seaton5023

 seaton_5023

seaton5023.com.au

seaton
colour your life.



A COMMUNITY BY

Renewal SA



Government
of South Australia

Delivered by Renewal SA in partnership with the South Australian Housing Trust.

Whilst all care has been taken in the preparation of this material, no responsibility is taken for errors or omissions and details may be subject to change. Intending purchasers should not rely on statements or representations and are advised to make their own enquiries to satisfy themselves in all respects. All allotment dimensions are indicative only. Artwork, images, and plans are impressions only and are not to be relied upon as a definitive reference. The Seaton development intends by this statement to exclude liability for all information contained herein. RLA 60810. Correct as at November 2025.