

seaton

The Henley
Lot 16



Artist impression




The Henley

House and Land Package

Occupying a highly desirable street corner and backing onto one of Seaton's peaceful reserves, The Henley is designed for easy, modern living with space to make every day more enjoyable.

Step inside to a bright, free-flowing living space where the open-plan kitchen, dining and lounge connect seamlessly to an alfresco patio. An island bench and walk-in pantry make the kitchen ideal for everyday cooking and entertaining. This floor also includes a generous laundry and direct

Lot 16 Parkana Place

 3  2.5  2

access to a private rear garden with access to the peaceful adjoining reserve.

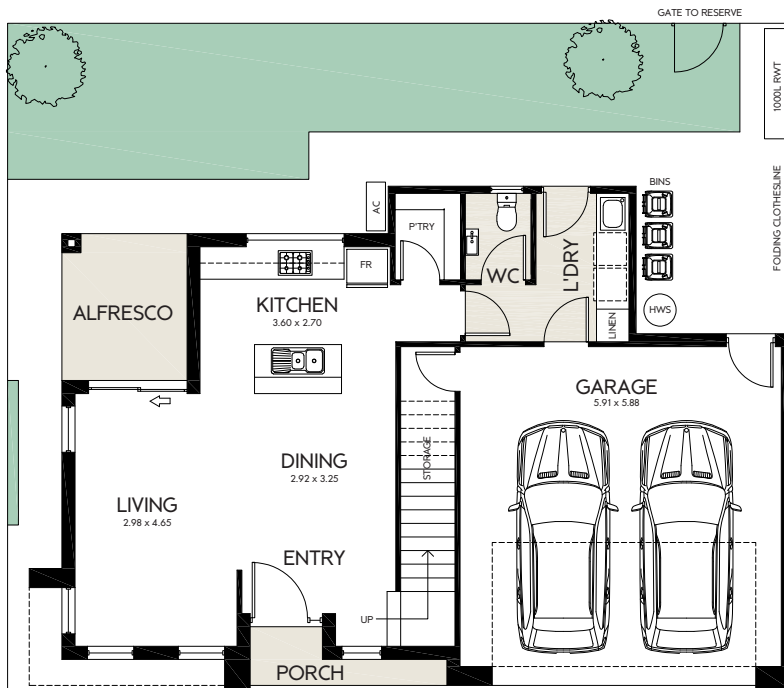
Upstairs, you'll find three well-proportioned bedrooms, all with built-in robes. The master suite enjoys its own elegant ensuite, while one of the other bedrooms offers views over the reserve. A central bathroom with a full-size bath adds everyday practicality.

Spread across two thoughtfully designed levels, The Henley offers low-maintenance living with comfort and style at its core.

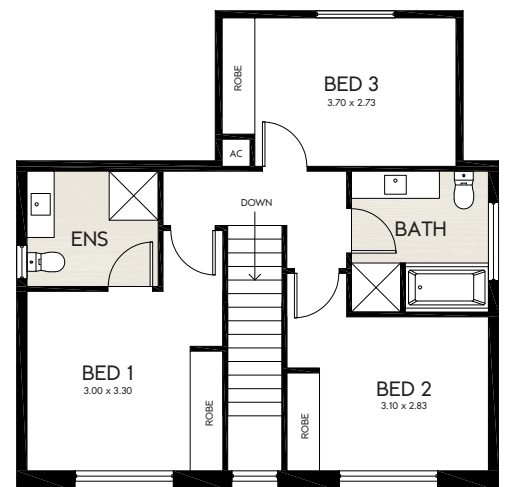
The Henley

House and Land Package

AREAS	m2
LAND SIZE	177.98
GROUND LIVING	61.01
UPPER LIVING	65.59
GARAGE	39.21
PORCH	2.53
ALFRESCO	6.21
TOTAL LIVING	174.55



GROUND FLOOR



FIRST FLOOR

Lot 16 Parkana Place



The townhouse that ticks every box, including:

- Direct access to neighbouring reserve
- Backyard landscaping
- Colorbond fencing
- Stainless steel dishwasher
- Spacious kitchen pantry
- Electric heat pump hot water system
- Custom-designed joinery throughout
- Wall-mounted split-system air-conditioning to living and main bedroom
- Durable woodgrain timber laminate flooring and carpets throughout
- Built-in sliding robes to all bedrooms
- Automatic panel-lift garage door
- Choice of colour schemes, selections and upgrades available
- Generous laundry room
- Clothesline and letterbox

1800 161 283
info@seaton5023.com.au

 seaton5023

 seaton_5023

seaton5023.com.au

seaton

colour your life.



A COMMUNITY BY

Renewal SA



Government
of South Australia

Delivered by Renewal SA in partnership with the South Australian Housing Trust.

Whilst all care has been taken in the preparation of this material, no responsibility is taken for errors or omissions and details may be subject to change. Intending purchasers should not rely on statements or representations and are advised to make their own enquiries to satisfy themselves in all respects. All allotment dimensions are indicative only. Artwork, images, and plans are impressions only and are not to be relied upon as a definitive reference. The Seaton development intends by this statement to exclude liability for all information contained herein. RLA 60810. Correct as at November 2025.