

seaton

The Nelson
Lots 34 & 61



The Nelson House and Land Package

The Nelson brings clever design and bright, open spaces together to create a home perfectly balanced for modern living.

On the ground level is the heart of the home. Here, the bright and spacious open-plan kitchen, dining and lounge area opens onto the private backyard – ideal for everyday living and relaxed entertaining. This floor also has a convenient guest powder room, a European laundry cleverly concealed within the garage and off-street space for a second car.

Lot 34 Parkana Street

HomeSeeker SA Eligible

 2 + STUDY  1.5  1

Upstairs, you'll find the two well-proportioned bedrooms, each with a built-in robe, along with a family bathroom, including a full-sized bath and separate WC. An upstairs study can easily be converted to a third bedroom.

Thoughtfully planned and effortlessly functional, The Nelson offers an inviting introduction to stylish, low-maintenance living.

The Nelson

House and Land Package

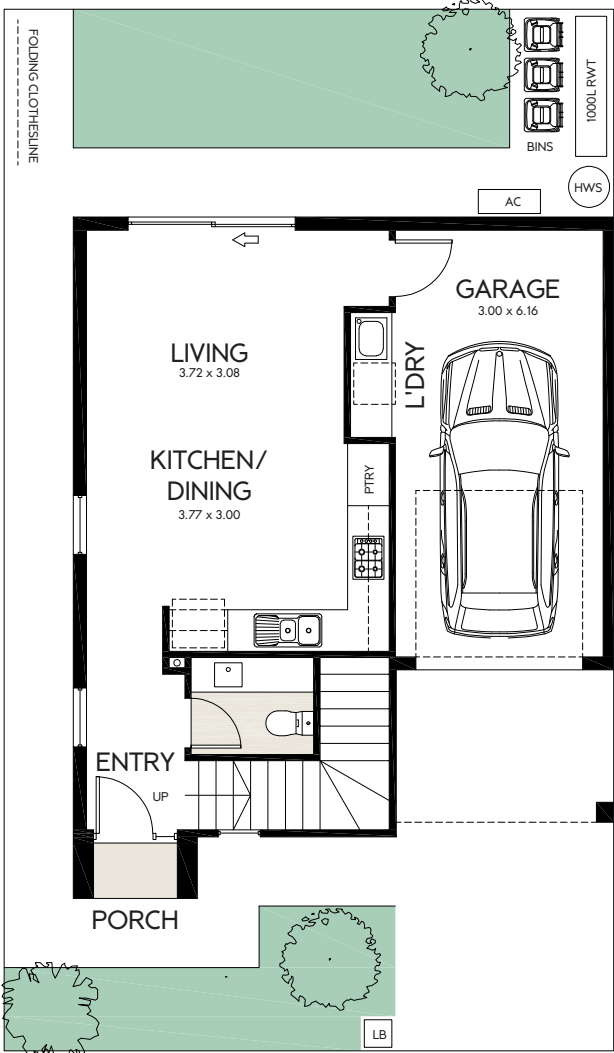
Lot 34 Parkana Street

HomeSeeker SA Eligible

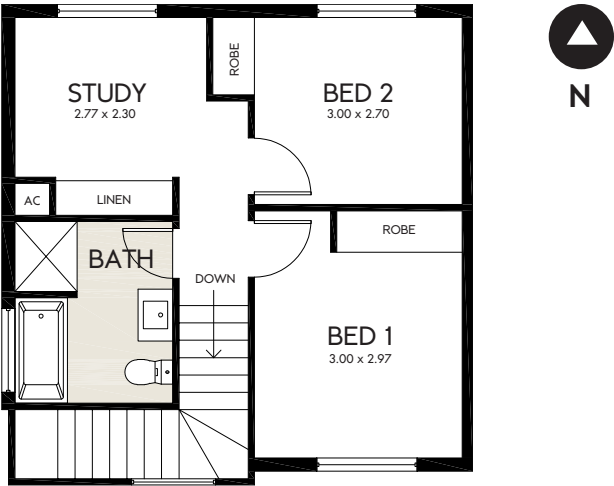
The townhouse that ticks every box, including:

- Front and backyard landscaping
- Colorbond fencing
- Stainless steel dishwasher
- Electric heat pump hot water system
- Custom-designed joinery throughout
- Wall-mounted split-system air-conditioning to living and main bedroom
- Durable woodgrain timber laminate flooring and carpets throughout
- Built-in sliding robes to all bedrooms
- Automatic panel-lift garage door
- Choice of colour schemes, selections and upgrades available
- Clothesline and letterbox

AREAS	m2
LAND SIZE	132.35
GROUND LIVING	40.40
UPPER LIVING	46.45
GARAGE	21.77
PORCH	1.52
TOTAL LIVING	110.14



GROUND FLOOR



FIRST FLOOR



The Nelson House and Land Package

The Nelson brings clever design and bright, open spaces together to create a home perfectly balanced for modern living.

On the ground level is the heart of the home. Here, the bright and spacious open-plan kitchen, dining and lounge area opens onto the private backyard – ideal for everyday living and relaxed entertaining. This floor also has a convenient guest powder room, a European laundry cleverly concealed within the garage and off-street space for a second car.

Lot 61 Matthews Avenue *HomeSeeker SA Eligible*

 2 + STUDY  1.5  1

Upstairs, you'll find the two well-proportioned bedrooms, each with a built-in robe, along with a family bathroom, including a full-sized bath and separate WC. An upstairs study can easily be converted to a third bedroom.

Thoughtfully planned and effortlessly functional, The Nelson offers an inviting introduction to stylish, low-maintenance living.

The Nelson

House and Land Package

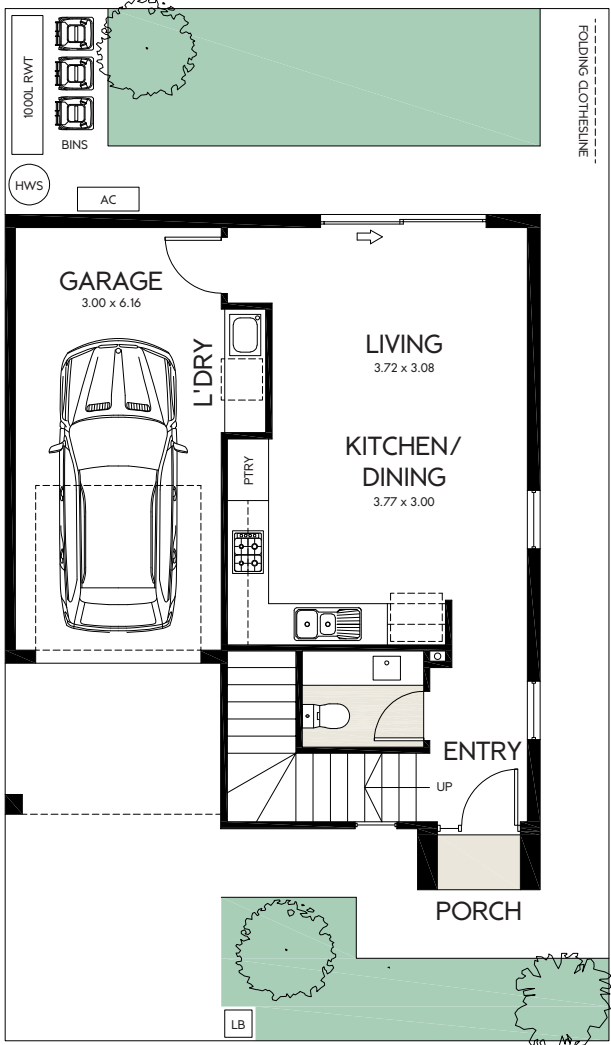
Lot 61 Matthews Avenue

HomeSeeker SA Eligible

The townhouse that ticks every box, including:

- Front and backyard landscaping
- Colorbond fencing
- Stainless steel dishwasher
- Electric heat pump hot water system
- Custom-designed joinery throughout
- Wall-mounted split-system air-conditioning to living and main bedroom
- Durable woodgrain timber laminate flooring and carpets throughout
- Built-in sliding robes to all bedrooms
- Automatic panel-lift garage door
- Choice of colour schemes, selections and upgrades available
- Clothesline and letterbox

AREAS	m2
LAND SIZE	132.35
GROUND LIVING	40.40
UPPER LIVING	46.45
GARAGE	21.77
PORCH	1.52
TOTAL LIVING	110.14



GROUND FLOOR



FIRST FLOOR

1800 161 283
info@seaton5023.com.au

 seaton5023

 seaton_5023

seaton5023.com.au

seaton
colour your life.



A COMMUNITY BY

Renewal SA



Government
of South Australia

Delivered by Renewal SA in partnership with the South Australian Housing Trust.

Whilst all care has been taken in the preparation of this material, no responsibility is taken for errors or omissions and details may be subject to change. Intending purchasers should not rely on statements or representations and are advised to make their own enquiries to satisfy themselves in all respects. All allotment dimensions are indicative only. Artwork, images, and plans are impressions only and are not to be relied upon as a definitive reference. The Seaton development intends by this statement to exclude liability for all information contained herein. RLA 60810. Correct as at November 2025.