

seaton

The Olsen
Lots 17 & 32





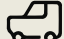
Artist impression

The Olsen House and Land Package

Nestled on a corner next to one of Seaton's leafy green reserves, The Olsen is an extremely well-considered design that optimises the use of space and natural light, and is perfect for a growing family.

Balancing comfort and convenience, on the ground floor you'll find the study, a guest powder room and a well-proportioned laundry with access to the rear garden. This area then opens into a bright, open-plan living, kitchen and dining space. This inviting hub of the home flows into the secure backyard, where direct access to the adjoining

Lot 17 Parker Avenue

 3  2.5  1

reserve creates a sense of openness and connection to nature.

On the upper level, each of the three bedrooms includes built-in robes, with an elegant ensuite off the master suite. The remaining two bedrooms boast views overlooking the reserve, one of which includes a Juliet balcony.

Delivering low-maintenance living across two carefully crafted levels, The Olsen is designed for your ultimate comfort and lifestyle, while putting a tranquil green space right on your doorstep.

The Olsen

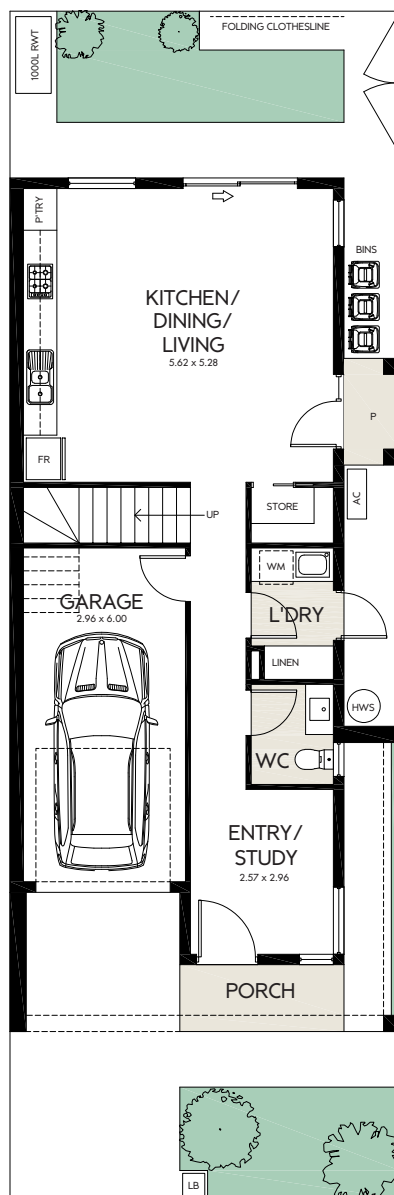
House and Land Package

Lot 17 Parker Avenue

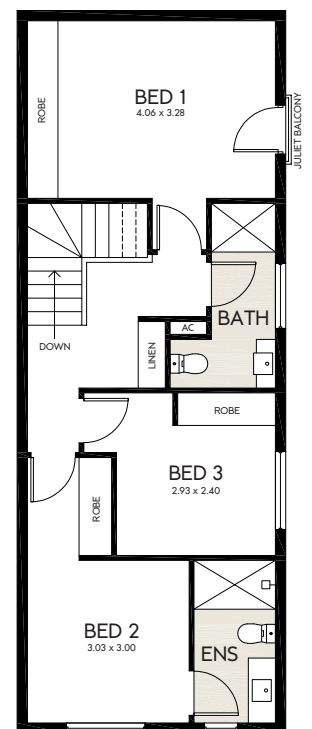
The townhouse that ticks every box, including:

- Direct access to neighbouring reserve
- Front and backyard landscaping
- Colorbond fencing
- Stainless steel dishwasher
- Electric heat pump hot water system
- Custom-designed joinery throughout
- Wall-mounted split-system air-conditioning to living and main bedroom
- Durable woodgrain timber laminate flooring and carpets throughout
- Built-in sliding robes to all bedrooms
- Dedicated study nook
- Automatic panel-lift garage door
- Choice of colour schemes, selections and upgrades available
- Separate laundry room
- Clothesline and letterbox

AREAS	m2
LAND SIZE	149.38
GROUND LIVING	60.52
UPPER LIVING	66.70
GARAGE	20.34
PORCH	5.46
TOTAL LIVING	153.02



GROUND FLOOR



FIRST FLOOR





Artist impression




The Olsen

House and Land Package

Nestled on a corner next to one of Seaton's leafy green reserves, The Olsen is an extremely well-considered design that optimises the use of space and natural light, and is perfect for a growing family.

Balancing comfort and convenience, on the ground floor you'll find the study, a guest powder room and a well-proportioned laundry with access to the rear garden. This area then opens into a bright, open-plan living, kitchen and dining space. This inviting hub of the home flows into the secure backyard, where direct access to the adjoining

Lot 32 Parkana Street

 3  2.5  1

reserve creates a sense of openness and connection to nature.

On the upper level, each of the three bedrooms includes built-in robes, with an elegant ensuite off the master suite. The remaining two bedrooms boast views overlooking the reserve, one of which includes a Juliet balcony.

Delivering low-maintenance living across two carefully crafted levels, The Olsen is designed for your ultimate comfort and lifestyle, while putting a tranquil green space right on your doorstep.

The Olsen

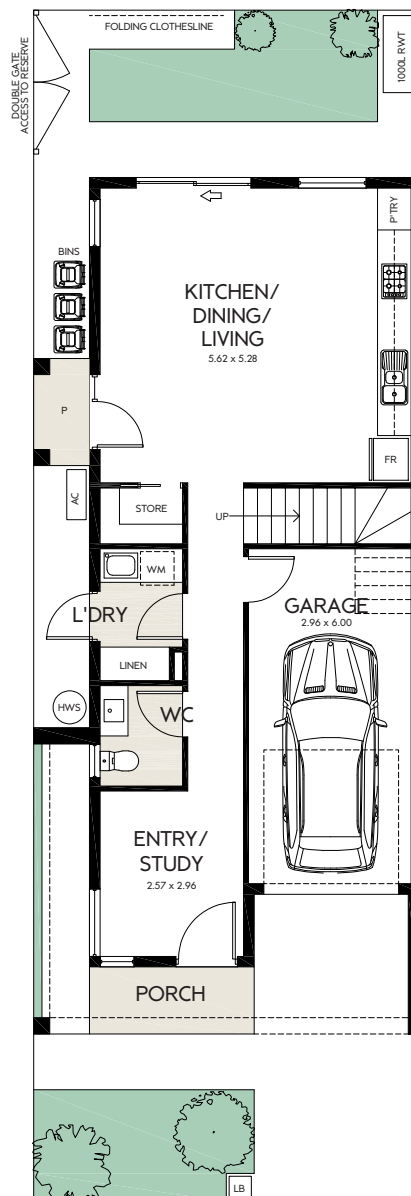
House and Land Package

Lot 32 Parkana Street

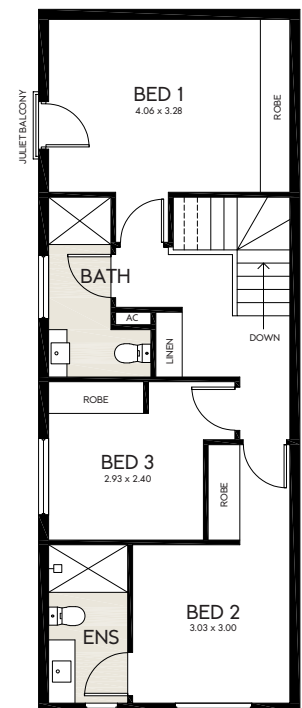
The townhouse that ticks every box, including:

- Direct access to neighbouring reserve
- Front and backyard landscaping
- Colorbond fencing
- Stainless steel dishwasher
- Electric heat pump hot water system
- Custom-designed joinery throughout
- Wall-mounted split-system air-conditioning to living and main bedroom
- Durable woodgrain timber laminate flooring and carpets throughout
- Built-in sliding robes to all bedrooms
- Dedicated study nook
- Automatic panel-lift garage door
- Choice of colour schemes, selections and upgrades available
- Separate laundry room
- Clothesline and letterbox

AREAS	m2
LAND SIZE	149.38
GROUND LIVING	60.52
UPPER LIVING	66.70
GARAGE	20.34
PORCH	5.46
TOTAL LIVING	153.02



GROUND FLOOR



FIRST FLOOR



1800 161 283
info@seaton5023.com.au

 seaton5023

 seaton_5023

seaton5023.com.au

seaton

colour your life.



A COMMUNITY BY

Renewal SA



Government
of South Australia

Delivered by Renewal SA in partnership with the South Australian Housing Trust.

Whilst all care has been taken in the preparation of this material, no responsibility is taken for errors or omissions and details may be subject to change. Intending purchasers should not rely on statements or representations and are advised to make their own enquiries to satisfy themselves in all respects. All allotment dimensions are indicative only. Artwork, images, and plans are impressions only and are not to be relied upon as a definitive reference. The Seaton development intends by this statement to exclude liability for all information contained herein. RLA 60810. Correct as at November 2025.