

seaton

The Tennyson
Lots 24 & 25





The Tennyson

House and Land Package

Nestled on a corner next to one of Seaton's leafy green reserves, The Tennyson is an extremely well-considered design that optimises the use of space and natural light, and is perfect for a growing family.

Inside, this home continues to elevate the whole living experience. The open-plan ground floor seamlessly unites the living and dining area, with a walk-in pantry and laundry off the kitchen. Along with access to the backyard and reserve, this floor has

Lot 24 Parker Avenue

 3  3  1

the first of the bedrooms including a built-in robe and a bathroom with a full-sized bath.

Upstairs, you'll find a retreat which overlooks the reserve, along with the two other bedrooms, each with elegant ensuites and built-in robes, one with a light-filled, private balcony.

Thoughtfully designed inside and out, The Tennyson blends style, comfort and a seamless connection to nature.

The Tennyson

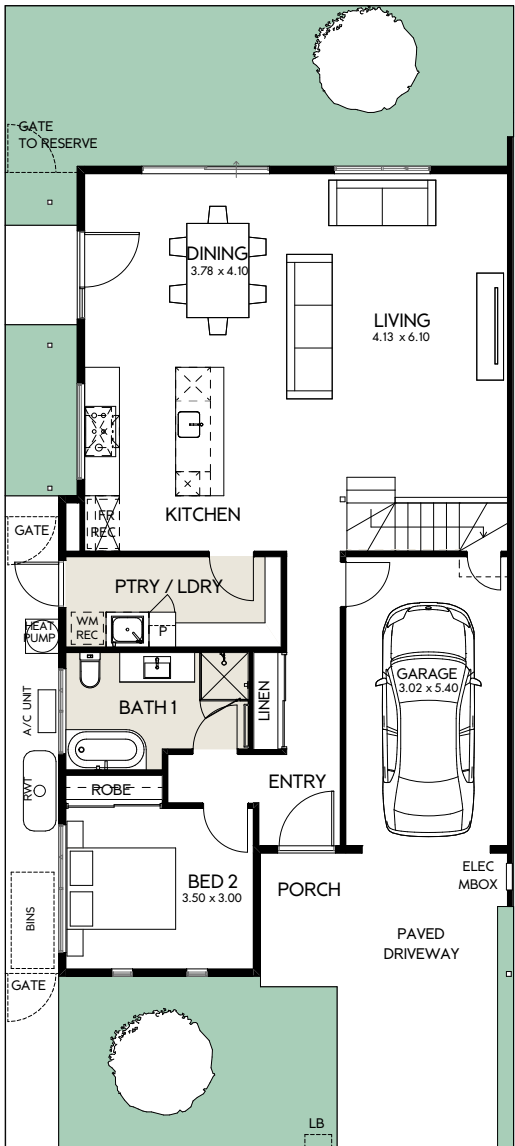
House and Land Package

Lot 24 Parker Avenue

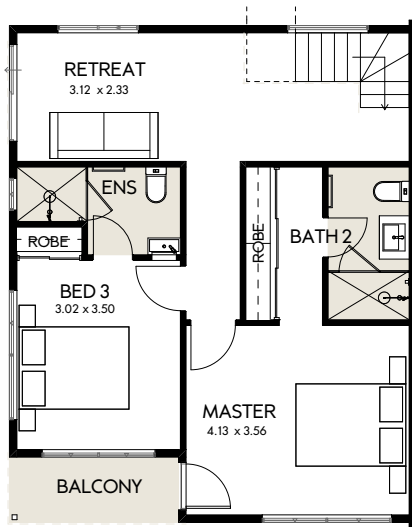
The townhouse that ticks every box, including:

- Direct access to neighbouring reserve
- Upstairs retreat
- Balcony to primary suite
- Extensive custom-designed joinery throughout
- Ensuite in primary suite and upstairs bedroom
- Built-in sliding robes to bedrooms
- Stainless steel dishwasher
- 60cm induction cooktop
- Durable woodgrain timber laminate flooring and carpets throughout
- Automatic garage door
- Choice of colour schemes, selections and upgrades available

| AREAS | m2 |
|---------------|--------|
| LAND SIZE | 205 |
| GROUND LIVING | 97.92 |
| UPPER LIVING | 64.85 |
| GARAGE | 17.10 |
| PORCH | 3.67 |
| BALCONY | 3.75 |
| TOTAL LIVING | 187.29 |



GROUND FLOOR



FIRST FLOOR



Artist impression




The Tennyson

House and Land Package

Nestled on a corner next to one of Seaton's leafy green reserves, The Tennyson is an extremely well-considered design that optimises the use of space and natural light, and is perfect for a growing family.

Inside, this home continues to elevate the whole living experience. The open-plan ground floor seamlessly unites the living and dining area, with a walk-in pantry and laundry off the kitchen. Along with access to the backyard and reserve, this floor has

Lot 25 Parkana Street

 3  2.5  1

the first of the bedrooms including a built-in robe and a bathroom with a full-sized bath.

Upstairs, you'll find a retreat which overlooks the reserve, along with the two other bedrooms, each with elegant ensuites and built-in robes, one with a light-filled, private balcony.

Thoughtfully designed inside and out, The Tennyson blends style, comfort and a seamless connection to nature.

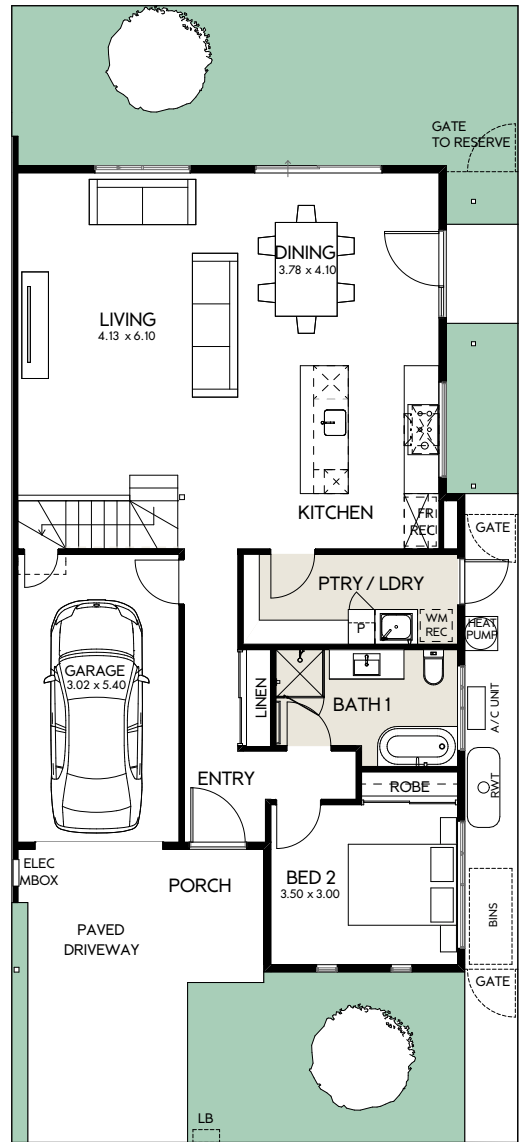
The Tennyson

House and Land Package

Lot 25 Parkana Street

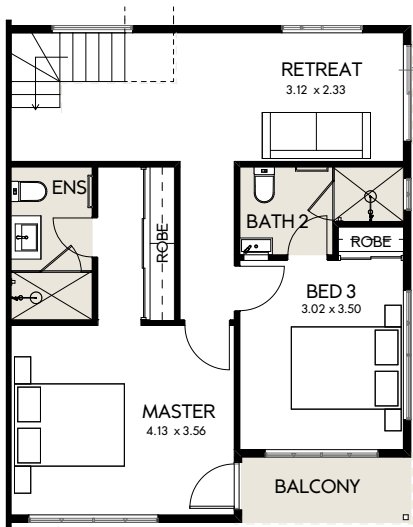
The townhouse that ticks every box, including:

- Direct access to neighbouring reserve
- Upstairs retreat
- Balcony to primary suite
- Extensive custom-designed joinery throughout
- Ensuite in primary suite and upstairs bedroom
- Built-in sliding robes to bedrooms
- Stainless steel dishwasher
- 60cm induction cooktop
- Durable woodgrain timber laminate flooring and carpets throughout
- Automatic garage door
- Choice of colour schemes, selections and upgrades available



GROUND FLOOR

| AREAS | m2 |
|---------------|--------|
| LAND SIZE | 203 |
| GROUND LIVING | 97.92 |
| UPPER LIVING | 64.85 |
| GARAGE | 17.10 |
| PORCH | 3.67 |
| BALCONY | 3.75 |
| TOTAL LIVING | 187.29 |



FIRST FLOOR

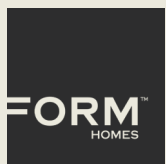
1800 161 283
info@seaton5023.com.au

 seaton5023

 seaton_5023

seaton5023.com.au

seaton
colour your life.



A COMMUNITY BY

Renewal SA



Government
of South Australia

Delivered by Renewal SA in partnership with the South Australian Housing Trust.

Whilst all care has been taken in the preparation of this material, no responsibility is taken for errors or omissions and details may be subject to change. Intending purchasers should not rely on statements or representations and are advised to make their own enquiries to satisfy themselves in all respects. All allotment dimensions are indicative only. Artwork, images, and plans are impressions only and are not to be relied upon as a definitive reference. The Seaton development intends by this statement to exclude liability for all information contained herein. RLA 60810. Correct as at November 2025.