

seaton

The Hidson
Lots 13-15






The Hidson

House and Land Package

Positioned on a prominent corner and backing onto one of Seaton's leafy reserves, Lot 13 showcases The Hidson — a two-storey home that maximises space to deliver comfort, convenience and contemporary living.

The lower level opens into the heart of the home — the bright, open-plan lounge, kitchen and dining area. This welcoming space extends seamlessly to a landscaped backyard, with direct access to the adjoining reserve. A well-placed

Lot 13 Parkana Place

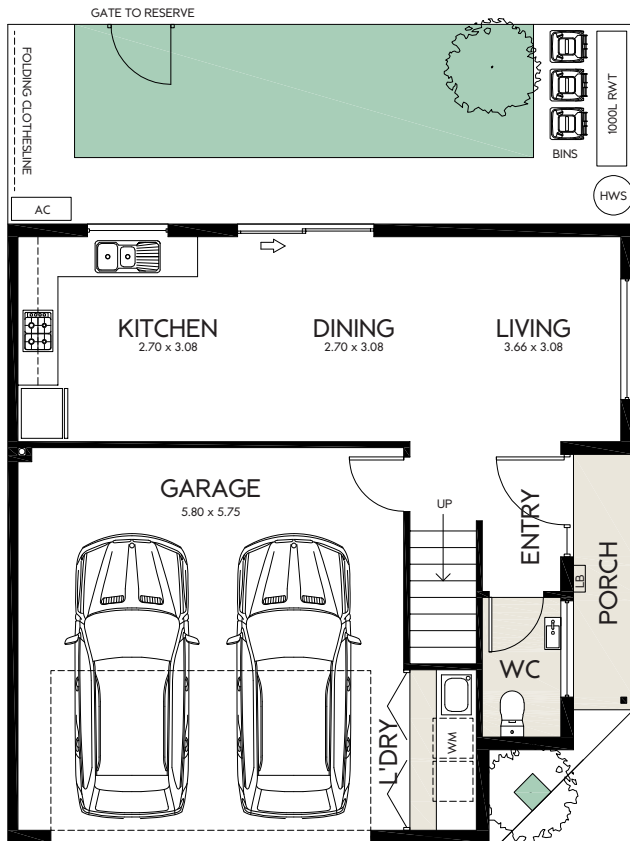
 3  2.5  2

guest powder room, a neatly integrated European laundry and internal access from the double garage add to the everyday convenience.

Upstairs, The Hidson offers three well-appointed bedrooms, each with built-in robes. The master suite enjoys the privacy of its own elegant ensuite, while the remaining bedrooms capture views across the reserve. Blending style with low-maintenance design, The Hidson makes modern living effortless.

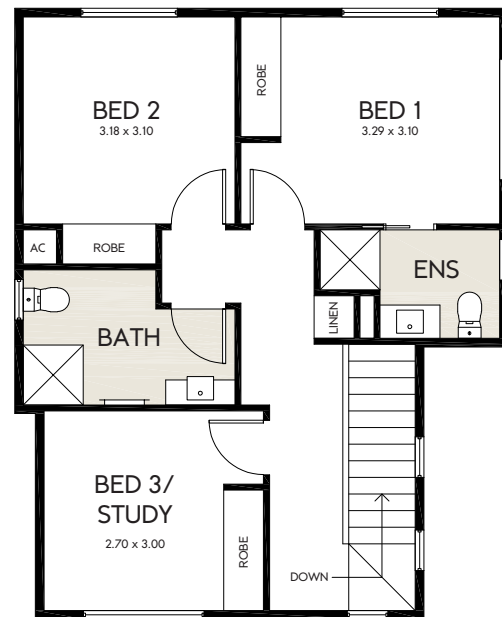
The Hidson

House and Land Package



GROUND FLOOR

AREAS	m2
LAND SIZE	113.62
GROUND LIVING	40.89
UPPER LIVING	61.69
GARAGE	39.49
PORCH	3.45
TOTAL LIVING	145.46



FIRST FLOOR

Lot 13 Parkana Place

The townhouse that ticks every box, including:

- Direct access to neighbouring reserve
- Backyard landscaping
- Colorbond fencing
- Stainless steel dishwasher
- Electric heat pump hot water system
- Custom-designed joinery throughout
- Wall-mounted split-system air-conditioning to living and main bedroom
- Durable woodgrain timber laminate flooring and carpets throughout
- Built-in sliding robes to all bedrooms
- Automatic panel-lift garage door
- Built-in sliding robes to all bedrooms
- Choice of colour schemes, selections and upgrades available
- Clothesline and letterbox






Artist impression

The Hidson House and Land Package

Backing onto one of Seaton's leafy reserves, The Hidson is a thoughtfully designed two-storey home that makes the most of every inch for comfort, convenience and modern living.

The lower level leads to the heart of the home — the bright, open-plan lounge, kitchen and dining area. This welcoming space extends seamlessly to a landscaped backyard, with direct access to the adjoining reserve. A well-placed guest powder room, a neatly integrated European laundry and internal access

Lot 14 Parkana Place

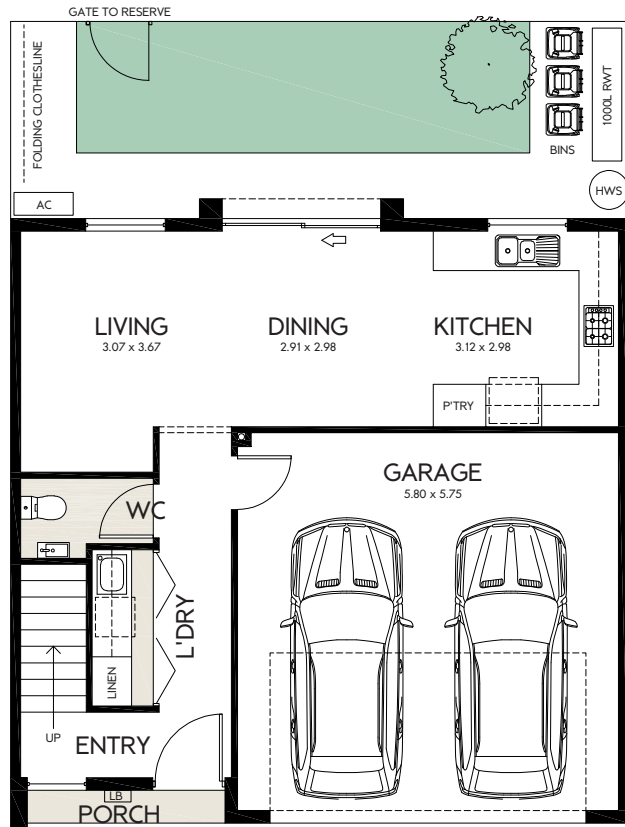
 3  2.5  2

from the double garage add to the everyday convenience.

Upstairs, The Hidson offers three well-appointed bedrooms, each with built-in robes. The master suite enjoys the privacy of its own elegant ensuite, while the remaining bedrooms capture views across the reserve. A central bathroom — featuring a full-size bath and a separate WC — ensures plenty of comfort for busy households. Blending style with low-maintenance design, The Hidson makes modern living effortless.

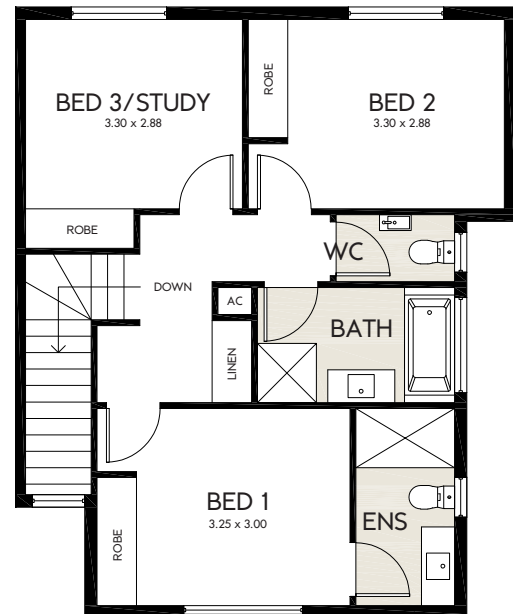
The Hidson

House and Land Package



GROUND FLOOR

AREAS	m2
LAND SIZE	115.62
GROUND LIVING	48.35
UPPER LIVING	64.34
GARAGE	36.49
PORCH	1.95
TOTAL LIVING	151.13



FIRST FLOOR



Lot 14 Parkana Place

The townhouse that ticks every box, including:

- Direct access to neighbouring reserve
- Backyard landscaping
- Colorbond fencing
- Stainless steel dishwasher
- Electric heat pump hot water system
- Custom-designed joinery throughout
- Wall-mounted split-system air-conditioning to living and main bedroom
- Durable woodgrain timber laminate flooring and carpets throughout
- Built-in sliding robes to all bedrooms
- Automatic panel-lift garage door
- Built-in sliding robes to all bedrooms
- Choice of colour schemes, selections and upgrades available
- Clothesline and letterbox



Artist impression




The Hidson

House and Land Package

Backing onto one of Seaton's leafy reserves, The Hidson is a thoughtfully designed two-storey home that makes the most of every inch for comfort, convenience and modern living.

The lower level leads to the heart of the home – the bright, open-plan lounge, kitchen and dining area. This welcoming space extends seamlessly to a landscaped backyard, with direct access to the adjoining reserve. A well-placed guest powder room, a neatly integrated European laundry and internal access

Lot 15 Parkana Place

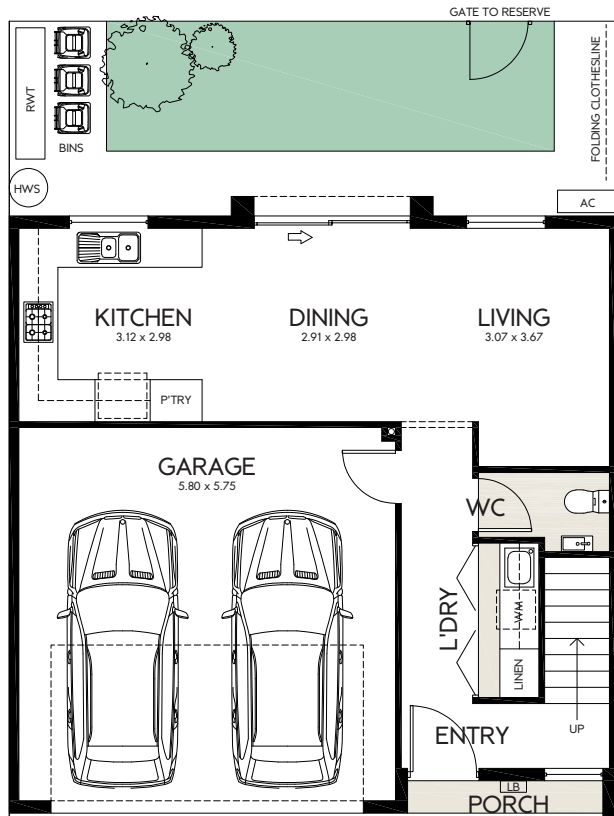
 3  2.5  2

from the double garage add to the everyday convenience.

Upstairs, The Hidson offers three well-appointed bedrooms, each with built-in robes. The master suite enjoys the privacy of its own elegant ensuite, while the remaining bedrooms capture views across the reserve. A central bathroom — featuring a full-size bath and a separate WC — ensures plenty of comfort for busy households. Blending style with low-maintenance design, The Hidson makes modern living effortless.

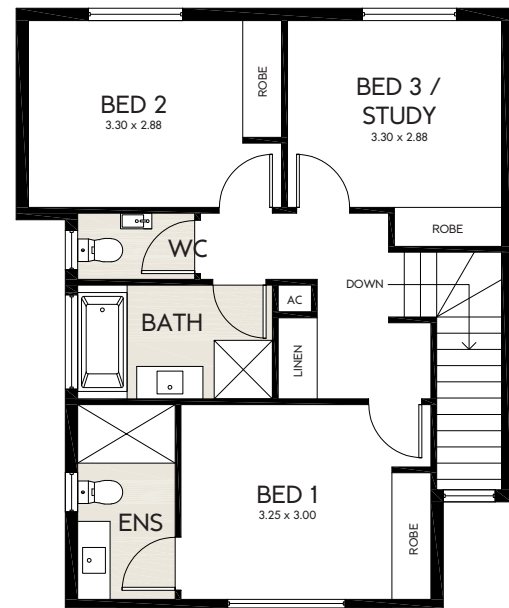
The Hidson

House and Land Package



GROUND FLOOR

AREAS	m2
LAND SIZE	115.62
GROUND LIVING	48.35
UPPER LIVING	64.34
GARAGE	36.49
PORCH	1.95
TOTAL LIVING	151.13



FIRST FLOOR



Lot 15 Parkana Place

The townhouse that ticks every box, including:

- Direct access to neighbouring reserve
- Backyard landscaping
- Colorbond fencing
- Stainless steel dishwasher
- Electric heat pump hot water system
- Custom-designed joinery throughout
- Wall-mounted split-system air-conditioning to living and main bedroom
- Durable woodgrain timber laminate flooring and carpets throughout
- Built-in sliding robes to all bedrooms
- Automatic panel-lift garage door
- Built-in sliding robes to all bedrooms
- Choice of colour schemes, selections and upgrades available
- Clothesline and letterbox

1800 161 283
info@seaton5023.com.au

 seaton5023

 seaton_5023

seaton5023.com.au

seaton

colour your life.



A COMMUNITY BY

Renewal SA



Government
of South Australia

Delivered by Renewal SA in partnership with the South Australian Housing Trust.

Whilst all care has been taken in the preparation of this material, no responsibility is taken for errors or omissions and details may be subject to change. Intending purchasers should not rely on statements or representations and are advised to make their own enquiries to satisfy themselves in all respects. All allotment dimensions are indicative only. Artwork, images, and plans are impressions only and are not to be relied upon as a definitive reference. The Seaton development intends by this statement to exclude liability for all information contained herein. RLA 60810. Correct as at November 2025.