

**seaton**

**The Kerr**

Lot 66



Artist impression

## The Kerr House and Land Package

A well-designed townhouse ideal for first home buyers and those working from home.

The Kerr is an extremely well-considered design that optimises space and natural light. The open-plan ground floor brings together the living and dining areas, with a galley-style kitchen overlooking the rear yard.

This level also features a study accessible directly from the front entry,

## Lot 66 Parkana Street



a powder room and a separate laundry with linen storage.

Upstairs, retreat to the main bedroom with integrated floor-to-ceiling robes, along with a centrally located bathroom servicing both bedrooms.

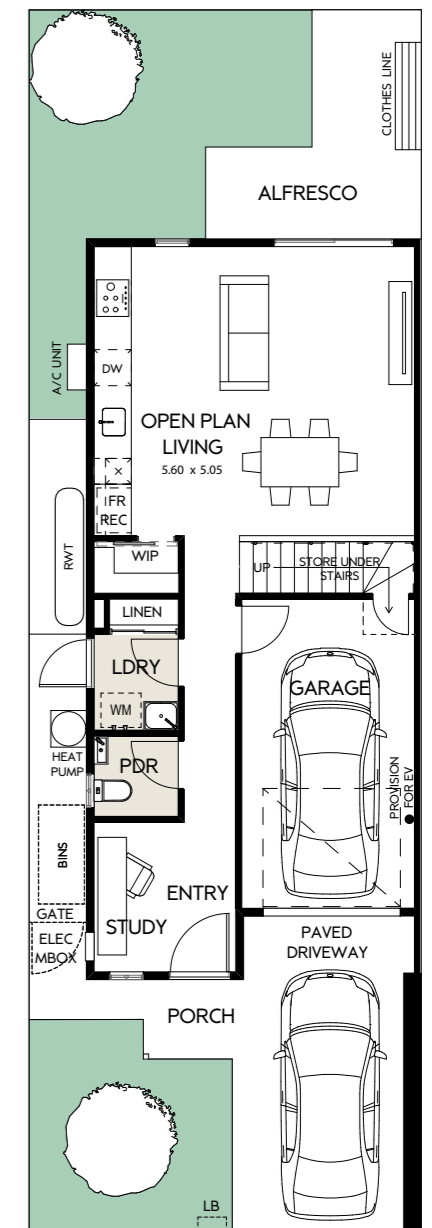
Using SipForm panel construction, The Kerr combined performance, sustainability and thoughtful design inside and out for contemporary living.

## The Kerr House and Land Package

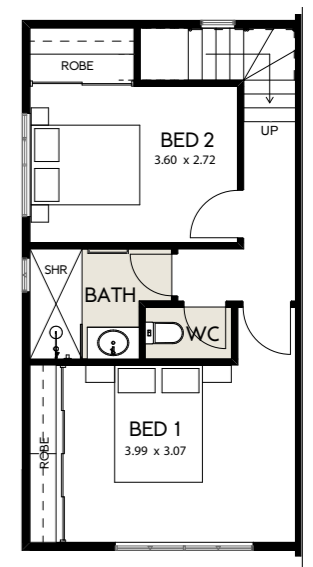
### Lot 66 Parkana Street

- Ducted reverse-cycle air conditioning
- Extensive custom-designed joinery throughout
- Durable woodgrain timber laminate flooring and carpets throughout
- Stainless steel dishwasher
- 60cm induction cooktop
- Upstairs bedrooms with centrally located bathroom
- Built-in sliding robes to bedrooms
- Automatic sectional garage door
- Choice of colour schemes, selections and upgrades available
- A smarter build with SipForm panel construction

AREAS	m2
LAND SIZE	147
GROUND LIVING	54
UPPER LIVING	44
GARAGE	17
PORCH	2
TOTAL inc garage	118m <sup>2</sup>



GROUND FLOOR



FIRST FLOOR

1800 161 283  
info@seaton5023.com.au

 seaton5023

 seaton\_5023

seaton5023.com.au

**seaton**  
colour your life.



A COMMUNITY BY

**Renewal SA**

Whilst all care has been taken in the preparation of this material, no responsibility is taken for errors or omissions and details may be subject to change. Intending purchasers should not rely on statements or representations and are advised to make their own enquiries to satisfy themselves in all respects. All allotment dimensions are indicative only. Artwork, images, and plans are impressions only and are not to be relied upon as a definitive reference. The Seaton development intends by this statement to exclude liability for all information contained herein. RLA 60810. Correct as at May 2026.